

- 12W - 18W - 25W Models available both in 3000K & 4500K
- Edge lit panel for optimal illumination
- SMD 2835 LED as Light source
- High light output at a reduced energy consumption
- Long Lifespan of over 40K hours - L80 Tested
- Wide angle of illumination with even light distribution,
- High CRI >85 (Colour Rendering Index) for natural looking light,
- Beam Angle of 100°
- Slim and light weight design - 40mm thick
- Dali, Triac, 0-10V dimmable drivers available
- 5 Years Limited Warranty



SURFACE ROUND PANELS - SOLARIS-S

6W-25W round panels for commercial applications

SOLARIS Series Round Panels are a slimline, modern design down lighters. Specified and designed in EU, targeted for European market's style requirements. All SOLARIS Series panels come with a perfect surface finish and soft, natural looking light output. With edge lined LED as light source, illumination surface of the panel provides even output at 100° angle of light. Using only the finest diffusers, Lumeno panels provide illumination without an unwanted glare.

Surface round panel has been designed and introduced into the range to provide hard ceiling solution within SOLARIS Series. RPL-S comes with a high lumen to wattage performance (85-90LM/W) and lamps size variety between ø180 mm – ø300 mm. Fittings offer an easy installation with driver fitted and concealed behind the lamp. Lumeno SOLARIS series panels come with a dedicated, non-dimmable constant current driver included and a reliable 5 YEARS warranty.



LED Source	SMD 2825 EPISTAR Dual Chip
Lifespan	40K Hours (LM80)
CRI	>85Ra
Input Voltage	200V-245V AC
Light Beam	>100°
Material	Anodized aluminum, PMMA Acrylic diffuser
Rating	IP40
Efficiency	85-90LM/W
Product finish	Powder Coating / White fishish / Brushed Nickle
Warranty	5 Years
Certification	CE Rohs Triple E
Environment	-20 - +50°C
Dimming	Non-Dimmable, Dali, Triac, 0-10V
Accessories	Complete with Non-Dimmable driver. WAGO connectors,

Drivers and accessories

LM-PSD XX C	Standard dimmable drivers, phasecut/triac
LM-PSD XX N	0/1-10V Dimmable drivers
LM-PSD XX D	Dali dimmable drivers

XX - 12, 18, 25

Ordering Codes :

Model number	Power	Body Finish	Light Temperature	Light Output	Efficiency	Size	Triple E
LM-RPL12S	12 Watt	White RAL9010	4500K (natural white)	>1100LM	85-95LM	Ø 180 x 40mm	LIG76782
LM-RPL12SWW			3000K (warm white)	>980LM			LIG76783
LM-RPL18S	18 Watt	White RAL9010	4500K (natural white)	>1650LM		Ø 240 x 40 mm	LIG76786
LM-RPL18S-B							
LM-RPL18SWW		Brushed Nickle	3000K (warm white)	>1450LM		Ø 240 x 40mm	LIG76787
LM-RPL18SWW-B							
LM-RPL25S	25W Watt	White RAL9010	4500K (natural white)	>2450LM		Ø 300 x 40mm	LIG76792
LM-RPL25S-B							
LM-RPL25SWW		Brushed Nickle	3000K (warm white)	>2250LM		Ø 300 x 40mm	LIG76793
LM-RPL25SWW-B							



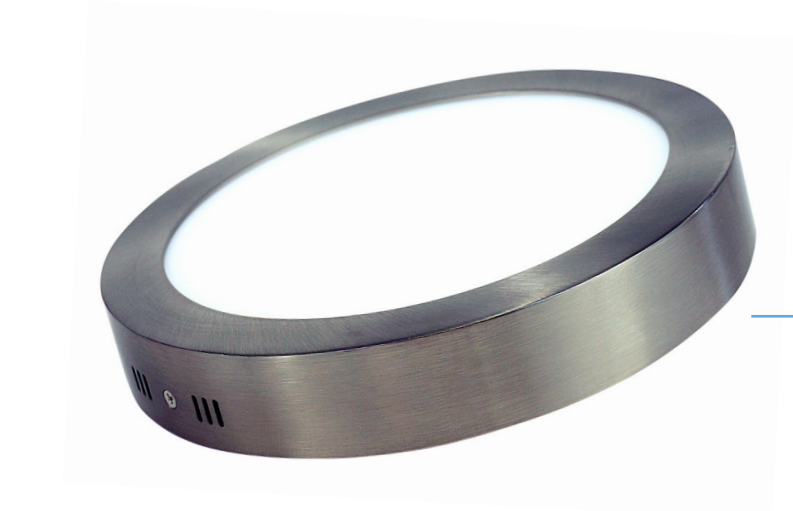
Modern lighting

Stylish replacement for popular 2D lamp. Strong light output and long lasting performance.



Selection of sizes

Surface series of Solaris panels are available in stock in all variations : 12W-18W-25W both in 4000K and 3000K .



LUMENO  
LED LIGHTING DISTRIBUTION

Easy installation

Fitting is complete with an integrated bracket, making installation quick yet solid. Driver sits on top of the fitting, hidden away.



Quality stylish finish

Solaris - S is available in supreme, brushed nickle finished, with anti-corrosive coating.